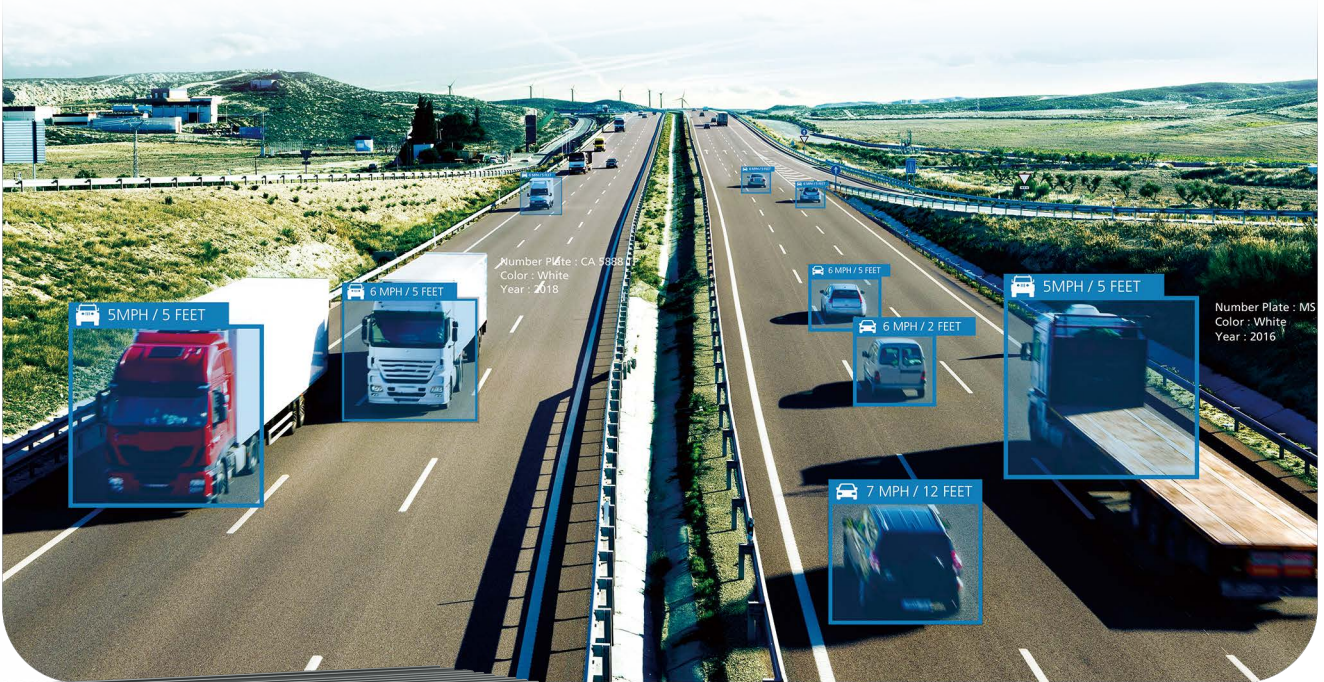


# EAC

# 2000/2100



NVIDIA® Jetson Xavier™ NX Edge AI Computing System



▲ Traffic Vision



▼ Public Safety



▲ Auto Optical Inspection

- Small form factor NVIDIA® Jetson Xavier™ NX supports up to 21 TOPS AI performance
- Advanced NVIDIA Volta™ architecture with 384 NVIDIA® CUDA® cores and 48 Tensor cores
- Fanless -20°C to 70°C operation
- 4 GigE LAN with 2 PoE+, 4 USB 3.1, 1 Digital Display
- Supports 4 GMSL2 automotive cameras with Fakra-Z
- M.2 for 5G/4G/LTE/WiFi/BT/GPRS/UMTS
- Storage : M.2 PCIe NVMe SSD, External Micro SD
- DC 9V to 50V wide range power input
- Support 24/7 secure remote monitoring, control, and OTA deployment empowered by Allxon



## Vecow

# Specifications

## System

CPU	6-core NVIDIA Carmel ARM® v8.2 64-bit CPU
GPU	384-core NVIDIA Volta™ GPU with 48 Tensor Cores
DL Accelerator	2x NVDLA Engines
Memory	1 LPDDR4x DRAM, 8GB
OS	Linux Ubuntu 18.04 with JetPack

## I/O Interface

USB	4 USB 3.1 Type A
Serial	2 COM RS-232/485
CAN Bus (EAC-2100)	1 CAN Bus 2.0 A/B
Micro USB	- 1 Micro USB console debug port - 1 Micro USB OS flash port
Button	- 1 User-Define Button - 1 Force Recovery Button
LED	2 PoE, 2 User Programming
SIM	1 Nano SIM Card Socket
Antenna	6 Antenna for 5G/WiFi/4G/LTE/GPRS/UMTS

## Expansion

M.2	- 1 M.2 Key B Socket (3042/3052, PCIe/USB3) - 1 M.2 Key E Socket (2230, PCIe/USB)
-----	--

## Graphics

Interface	1 Digital Display, up to 3840 x 2160 @60Hz
Video Encode	- HEVC : Up to 2x2160p @60, 4x2160p @30, 10x1080p @60, 22x1080p @30 - H.264 : Up to 2x2160p @60, 4x2160p @30, 10x1080p @60, 20x1080p @30
Video Decode	- HEVC : Up to 2x4320p @30, 6x2160p @60, 12x2160p @30, 22x1080p @60, 44x1080p @30 - H.264 : Up to 2x2160p @60, 6x2160p @30, 10x1080p @60, 22x1080p @30

## Camera (EAC-2100)

GMSL	4 Fakra-Z connectors for GMSL 1/2 automotive cameras
------	--

## Storage

M.2	1 M.2 Key M Socket (2280, PCIe x1)
eMMC	1 eMMC 5.1, 16GB
SD	1 Micro SD (External)

## Ethernet

LAN 1	10/100/1000 Base-T Ethernet GigE LAN, RJ45 Connector
LAN 2	10/100/1000 Base-T Ethernet GigE LAN, RJ45 Connector

## PoE

LAN 3	IEEE 802.3at (25.5W/48V) GigE PoE+ LAN, RJ45 Connector
LAN 4	IEEE 802.3at (25.5W/48V) GigE PoE+ LAN, RJ45 Connector

## Power

Power Input	DC 9V to 50V
Power Interface	3-pin Terminal Block : V+, V-, Frame Ground

## Mechanical

Dimensions	<b>EAC-2000</b> : 150.4mm x 106.2mm x 50.0mm (5.92" x 4.18" x 1.97") <b>EAC-2100</b> : 150.4mm x 106.2mm x 62.0mm (5.92" x 4.18" x 2.44")
Weight	<b>EAC-2000</b> : 1.2 kg (2.6 lb) <b>EAC-2100</b> : 1.3 kg (2.9 lb)
Mounting	- Wallmount by mounting bracket - DIN Rail Mount (Optional)

## Environment

Operating Temp.	<b>EAC-2000</b> : 15W TDP : -20°C to 65°C (-4°F to 149°F) 10W TDP : -20°C to 70°C (-4°F to 158°F) <b>EAC-2100</b> : 15W TDP : -20°C to 60°C (-4°F to 140°F) 10W TDP : -20°C to 65°C (-4°F to 149°F)
Storage Temp.	-40°C to 85°C (-40°F to 185°F)
Humidity	5% to 95% Humidity, non-condensing
Relative Humidity	95% @70°C
Shock	Operating, MIL-STD-810G, Method 516.7, Procedure I
Vibration	Operating, MIL-STD-810G, Method 514.7, Procedure I, Category 4
EMC	CE, FCC, EN50155, EN50121-3-2

\* All product information may subject to change without prior notice.  
\* The rights of all brand names, product names and trademarks belong to their respective owners.  
Copyright © 2023 Vecow Co., Ltd. All rights reserved.

# Order Information

Model Name	Platform	LAN PoE*	USB 3.1	M.2	Serial	SIM	GMSL	CAN
EAC-2000	Jetson Xavier NX	4	2	4	3	2	1	-
EAC-2100								4

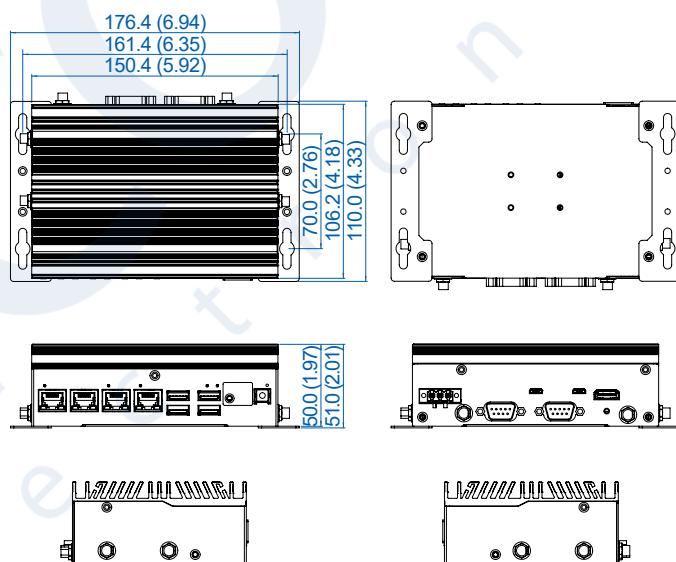
## Accessories

PWA-120W1	120W, 24V, 90V AC to 264V AC Power Adapter with 3-pin Terminal Block
PWA-160W-WT	160W, 24V, 85V AC to 264V AC Power Adapter with 3-pin Terminal Block, Wide Temperature -30°C to +70°C
DIN-RAIL	DIN Rail Kit
GMSL Camera Kit	GMSL Camera with Fakra-Z connector
M.2 Storage Module	M.2 Key M/Key B PCIe Storage Module
5G Module	5G Module with Antenna
4G Module	4G/GPS Module with Antenna
WiFi & Bluetooth	WiFi & Bluetooth Module with Antenna

# Dimensions & Drawing

Unit : mm (inch)

## EAC-2000



## EAC-2100

