



*Light is perception, generates inspiration
and intensifies emotion*

LED & SSL

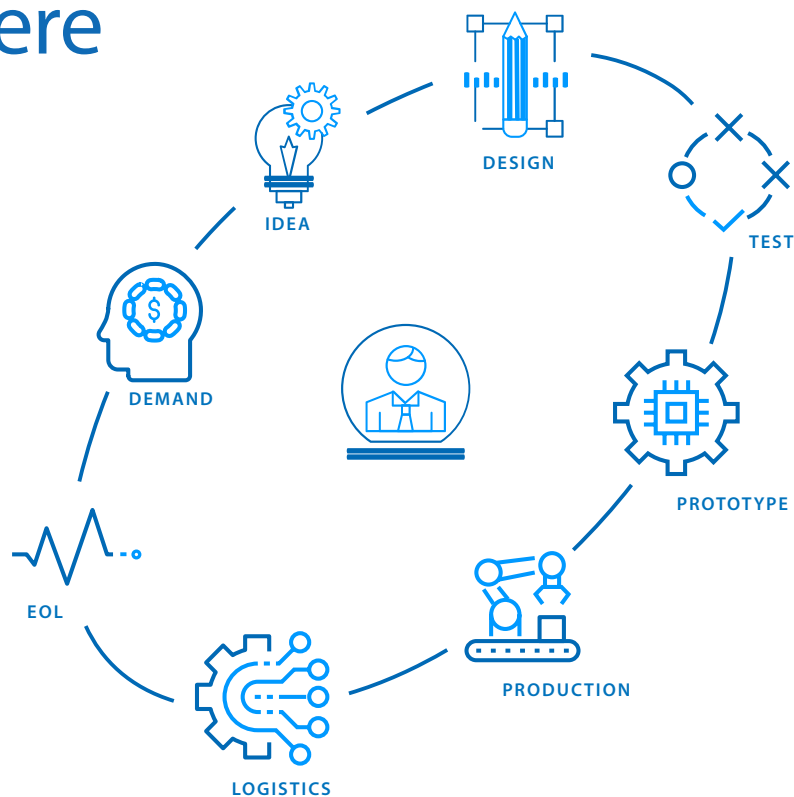


LED + Solid State Lighting & Alcom



Alcom delivers cutting edge LED Lighting Solutions. Whether is about your Light Sources, Reflectors and lenses, Cooling solutions, Thermal Management Components, Drivers and Remote Controls, Alcom offers not only the latest technology solutions, also you receive high level technical support to get your Light Solution running with the highest quality, most attractive priced and shortest time to market. At Alcom you are in safe hands, so what's your next big Light Solutions idea?

Co-creation starts here



Alcom considers everybody an indispensable added value in the collaborative chain with all of its partners.



Applications & Markets



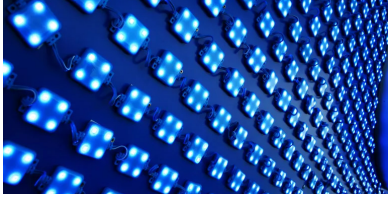
AUTOMOTIVE



ENTERTAINMENT & GAMING



KIOS, POS & DIGITAL SIGNAGE



LIGHTING & ILLUMINATION



INDOOR LIGHTING



OUTDOOR LIGHTING



HORTICULTURE



RETAIL



ARCHITECTURAL

Key partners



KNOW HOW. NO LIMITS.

Technologies

Led ecosystems support and solutions



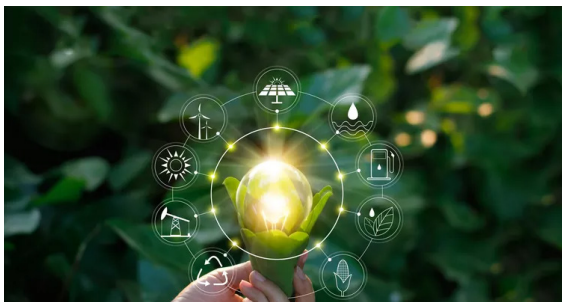
- LED heatsinks, heatpipes, liquid cooling
- Optics, holders and connectors
- LED power drivers & power-to-light solutions
- Smart driving controllers
- LED controllers & IC drivers
- LED lighting backlight, illumination & signalling, monitoring, supervision
- AC/DC non-isolated/isolated & LED lighting

Led strips



- Linear and square modules
- Strips for indoor/outdoor usage
- 12/24/48VDC & 230VAC LED strips
- Dot-free and COB LED strips
- Human centric, dim to warm and tuneable white LED strips
- RGB and RGBW LED strips
- Consumer & industrial vertical market-specific lighting LED strips
- Matching dimmable or non-dimmable CV drivers in different form factors with optional PIR sensors.
- LED strip accessories

Led light sources



- LED light sources- Chip-on-Board (CoB) arrays for lighting markets
- UV, IR, horticulture, specialty white, dynamic COB LEDs
- SMD, lamp & 7 segment displays
- LED modules & subsystems

Led power drivers and controls



- Programmable LED power-constant current; constant power; constant voltage
- Standard and smart outdoor/indoor LED power drivers
- Power-to-light solutions
- DC powered LED drivers
- Light management by voice command
- Wireless and smart intelligent control and dimming
- Flush mount solutions

LED & Solid State Lighting overview

Heatsinks

Heatsinks for Bridgelux and Luminus COB LEDs



Lenses

Led optics



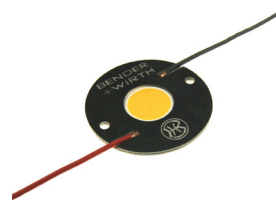
Optics for LED Lighting

Herculux optical platform



LED COB Holder

LED Holder Bender & Wirth



Power Supplies Indoor use

Indoor power supplies from Pairui



Outdoor LED driver

LED driver for street lighting



Round High Bay Drivers

2nd Generation with Dim-to-Low-Voltage



Dali LED drivers

IP66/IP67 LED drivers with DALI-2 D4i certification



COB and Array Modules

Enables Natural Human Centric Lighting



LED strips

For lighting of hotels, bars, restaurants, shops and residential environments



New product releases

KIRIN OPTICAL PLATFORM FOR BRIDGELUX AND LUMINUS BASED LIGHTING DESIGNS

The Kirin optical platform by Herculux uses COB holders suited for standard sized COB's making it even more versatile and powerful. Combine our Bridgelux COB (and/or Luminus COB) with our Kirin COB holder and choose your desired Kirin lens or reflector offering you the beam angle, color mixing for dim to warm or tunable white, anti-glare or ultra-thin optics that suits your fixtures. Contact us to get the right LED components for your next fixture.



1200W PROGRAMMABLE DRIVER WITH INV DIGITAL DIMMING

The ESM-1K2TxxxMx series is a 1200W, 3-channel, constant-current, programmable and IP66/IP67 rated LED driver that operates from 249-528Vac input with excellent power factor. This driver can support 3-channel luminaires to adjust current separately. It provides an auxiliary voltage and dim-to-off functionality for powering low voltage, wireless controls. The dimming control supports 0-10V dimming as well as two-way communication via Digital Dimming, a UART based communication protocol.

HIGH-POWER WHITE LED WITH ROUND EMITTER

SST-12 is a groundbreaking high-power white LED featuring a patented round emitter. This innovation sets a new standard in directional lighting by significantly enhancing the quality and brightness of beam spots. Compared to square-shaped emitters, the SST-12's round emitter offers remarkable advantages. Its compatibility with typically round-shaped optics results in superior brightness and color uniformity within beam spots.



COBS DELIVER INDUSTRY HIGHEST EFFICACY 200 LM/W

The Gen9 COB is a result of our continuous effort to improve CRI80 efficacy to 200 lm/W warm white and represents a 10% improvement from the previous generation CRI 80 Gen8 COBs. Gen9 COBs are available in a wide range of Light-Emitting Surfaces (LES) from 6 mm to 22 mm in diameter. The breakthrough performance represents the highest efficacy in the COB lighting market.

2-CHANNEL DRIVER – THE CUVÉE CCT TUNABLE DRIVER

The DMR-AOD Series 2 Channel LED driver offers universal input voltages (120-277V), CCT Tunable with dual 0/1 – 10V dimming control, and superior performance for small to medium size lighting fixtures, such as downlights, tracklights/spotlights and wall sconces where small form factor, precise CCT tunable control, flicker free, and high reliability are critical factors.



2835 STRIP LED 180 LED/M 8,8W/M 5M ULTRA HIGH EFFICACY

In particular, in this historic time, with the rising energy prices, it becomes essential to optimize consumption without giving up the light output. The new LED ULTRA HIGH EFFICACY Strips make it possible to create decorative scenarios with high aesthetic impact and low energy impact, both indoors and outdoors.

Alcom product portfolio

ELECTRONIC COMPONENT SOLUTIONS	WIRELESS EMBEDDED CONNECTIVITY & SENSORS	WIRELESS & INDUSTRIAL CONTROLS NETWORKING	DISPLAY & TOUCH
LED & SOLID STATE LIGHTING	POWER & EMC	RUGGED MOBILE COMPUTING	EMBEDDED SYSTEMS, AI & EDGE COMPUTING

<ul style="list-style-type: none"> • Semiconductors • Frequency & timing • Power management • Circuit protection & discretes • Magnetics • Passives & electromechanical • Connectors & cable assemblies • Photonics 	<ul style="list-style-type: none"> • Wireless modules • Antenna's • Sensors
<ul style="list-style-type: none"> • Routers & gateways • Wireless embedded computers • Industrial ethernet and IP variations • Wired & wireless machine networking • Antenna's • Device to cloud solutions • Connectivity & remote management services • Networking & connectivity 	<ul style="list-style-type: none"> • Displays • Touch screens • Optical bonding • Total display solutions
<ul style="list-style-type: none"> • LED light sources • Optics • Thermal management • Power & intelligent controls • LED modules 	<ul style="list-style-type: none"> • AC/DC power supplies • DC/DC converters • Power management modules • Wireless charging • E-mobility solutions • Transformers & power inductors • UPS • EMC filters
<ul style="list-style-type: none"> • Tablets • PDA's • Vehicle mount computers • Accessories 	<ul style="list-style-type: none"> • Computer-on-modules • Embedded boards • Industrial PC & automation • System integration

Bridging the gap between technology, people and business with a human interface.





ALCOM BELGIUM

Alcom electronics nv/sa
Singel 3
2550 Kontich
Tel: +32 (0)3 458 30 33
Fax: +32 (0)3 458 31 26
Email: info@alcom.be
www.alcom.be

ALCOM THE NETHERLANDS

Alcom Electronics B.V.
Rivium 1e straat 52
2909 LE Capelle a/d IJssel
Tel: +31 (0)10 288 25 00
Fax: +31 (0)10 288 25 25
Email: info@alcom.nl
www.alcom.nl

Get to know us

ALCOM PROVIDES THE WORLD'S MOST ADVANCED TECHNOLOGIES.

With a team of like-minded entrepreneurs, Alcom will continue to inspire its valued customers to use advanced innovative building blocks in vertical markets. The importance of providing high-level services and a human interface based on specialism, knowledge and design-in expertise will remain key differentiators.

Alcom is positioned for growth. We invite all our customers to discuss their current and future concepts and designs. Let's connect, work and grow together.

