

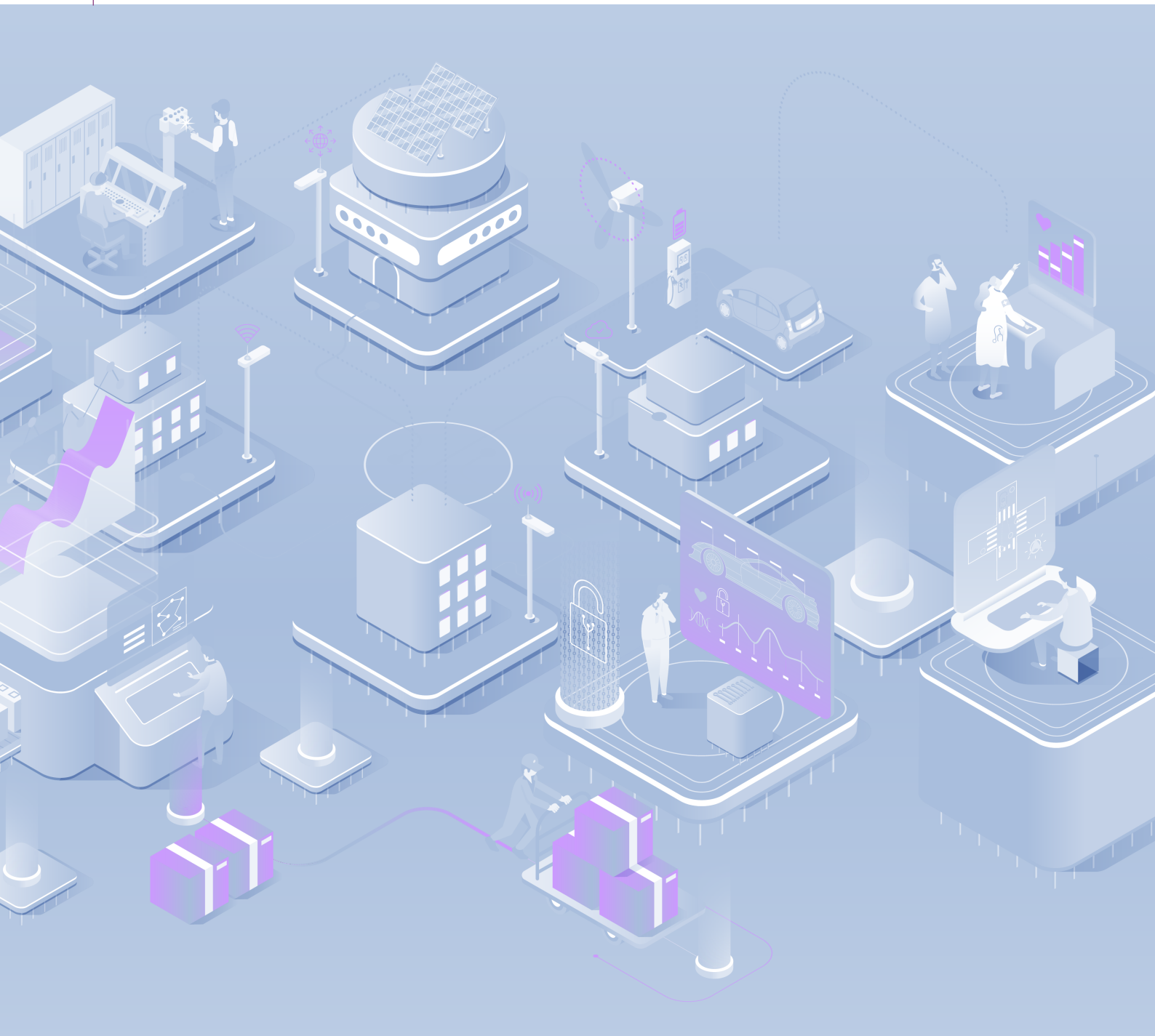


Featured

Simplify the IoT by delivering the device, software and service solution to accelerate your data-driven transformation



SIERRA
WIRELESS™

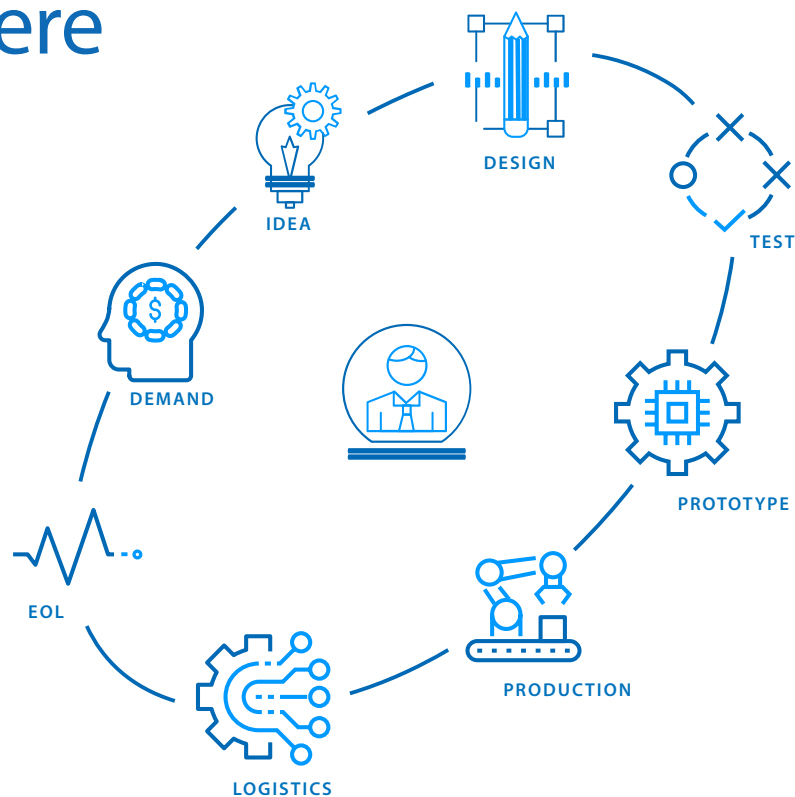


Sierra Wireless & Alcom



Sierra Wireless is an IoT pioneer, empowering businesses and industries to transform and thrive in the connected economy. Customers start with Sierra because we offer a device to cloud solution, comprised of embedded and networking solutions seamlessly integrated with our secure cloud and connectivity services. Sierra Wireless were first to market with the world's smallest module, embedded software, embedded SIM, interchangeable modules and 4G LTE and LTE-Advanced solutions. They offer the most comprehensive portfolio of wireless devices, including 2G, 3G, and 4G embedded modules and gateways which are seamlessly integrated with our secure cloud and connectivity services. Start with Sierra & Alcom to deliver new technology solutions, streamline deployments and take advantage of all the promises the IoT offers. Together we build your future in the Internet of Things.

Co-creation starts here



Alcom considers everybody an indispensable added value in the collaborative chain with all of its partners.



Applications & Markets



TRANSPORT & LOGISTICS



INDUSTRIAL
MANUFACTURING



ENERGY



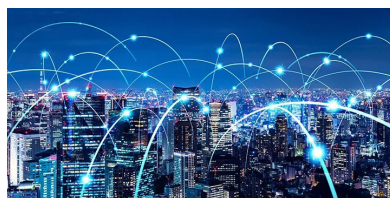
PUBLIC SAFETY



HEALTHCARE



COMMERCIAL BUILDING
INFRASTRUCTURE



SMART CITY

Antennas

- Carefully matched to operate with AirLink Routers and Gateways
- Tested and certified to enable high performance reliable connectivity
- Vastly simplified product sourcing and ordering process
- Serviced and supported by Sierra Wireless, with 3 year warranty
- Online selection tool to **design your own antennas** available on [Alcom website](http://www.alcom.nl/antenna-builder)

Design your own
antenna

www.alcom.nl/antenna-builder



SHARK FIN



DOME



BAT



WI-FI



PANEL



PADDLE

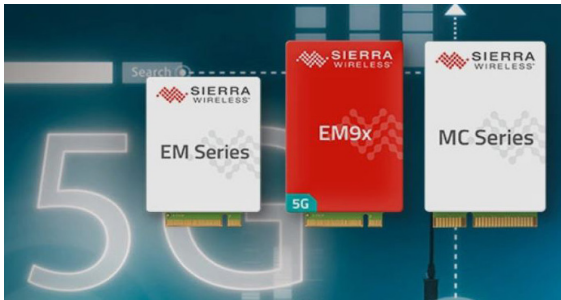
Product Overview

Modules & Gateways

5G Modules

EM and MC Series standards-based connectorized modules in Mini Card and M.2 form factors providing connectivity to the world's fastest 5G and 4G networks.

- Accelerate deployment and streamline logistics
- Protect your data and minimize risk
- Speed up development time and simplify integration complexity



Smart Modules

RC Series of embedded modules offers essential connectivity.

WP Series modules come with a Cortex-A processor running the Legato® application framework.

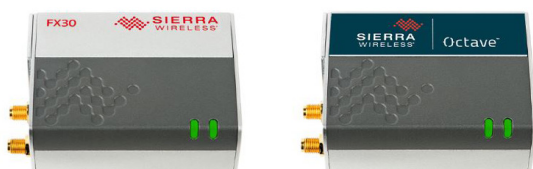
- Simple
- Scalable
- Secure



Industrial IoT Gateway

FX30 is the industry's smallest, most rugged, programmable IoT gateway that comes with the most advanced set of edge and cloud APIs, a secure embedded application framework and a tight integration to the cloud.

- High programmable
- Industrial grade
- Extensible
- Secure
- Ready-to-connect
- Global and scalable
- Pre-certified



LTE-M and NB-IOT modules

HL78 Series of LPWA modules offers best-in-class power efficiency and coverage to ensure field longevity for your battery-powered and low power deployments.

- Ultra low power
- Secure element
- Worldwide bands
- High transmit power



Product Overview

Router solutions

Airlink® XR90



- High Performance 4G/5G Wi-Fi 6 multi-network vehicle router
- Industry's highest performing 5G router, purpose-built for vehicles
- Future-proof, cartridge-based design for additional functions & features
- 5 ethernet ports and dual 4X4 MIMO Wi-Fi 6
- Remote device management and mobility-focused reporting through AirLink Premium

Airlink® XR80



- Expandable 4G/5G Wi-Fi 6 Multi network router
- Single-radio 5G router
- Easily expand to dual-radios and to add more functionality with the cartridge-based design
- 4 ethernet ports and 5x4 MIMO Wi-Fi 6
- Remote device management through AirLink complete

Airlink® RX55



- Industrial IoT Router with Edge Compute
- LTE-Advanced supporting 300Mbps/150Mbps (DL/UL)
- Dual-Band Wi-Fi with GNSS & CAN Bus for vehicle applications
- Low Power, Ethernet and dual-serial port
- Remote device management through AirLink complete

Airlink® RV55



- Rugged LTE-A pro router
- LTE-Advanced pro supporting 600Mbps/150Mbps (DL/UL)
- Dual-Band Wi-Fi (Optional), GNSS
- Ethernet and Dual-Serial port to connect legacy equipment
- Rugged design for industrial and vehicle applications
- Remote, secure network management in the cloud or in the enterprise

Airlink® RVX50



- Rugged 4G LTE-A Router
- LTE-Advanced performance at 2G power consumption – uses less than 1 watt
- Ideal for solar-powered applications
- Ruggedized, industrial grade form factor
- Enables edge computing applications with ALEOS application framework

Airlink® MG90



- Rugged Multi-Network 4G and 5G vehicle router
- Industry-leading, dual-radio vehicle networking platform
- Extensible multi-network connectivity with millisecond network switching
- Mobile, multi-network security with the AirLink® Connection Manager
- Instant network insight and control

Airlink® MP70



- Rugged 4G LTE-A Pro Router
- Offers high performance vehicle area network
- Provides connected vehicle awareness
- Purpose built for vehicles
- Provides secure intelligent communications
- Network management in the cloud or in the enterprise data center

Airlink® LX40



- Ethernet LTE Router
- Small, Compact form-factor
- Power-over-Ethernet (Powered Device)
- Wi-Fi option available

Airlink® LX60



- Dual Ethernet LTE Router
- Primary & backup connectivity
- LTE and Global support
- Dual Ethernet, RS232 & RS485 and multiple I/O to connect to legacy equipment
- Dual Ethernet, RS232 & RS485 and multiple I/O to connect to legacy equipment

New product releases

RELIABLE 4G LTE ADVANCED PRO CAT-13 MODULE

Ideal for industrial M2M and mobile computing solutions, the Sierra Wireless™ EM7590 Cat-13 embedded module delivers up to 400 Mbps downlink and 150 Mbps uplink high-speed connectivity. The EM7590 supports 27 worldwide LTE bands, including CBRS and FirstNet, and is ideal for global deployment with approvals from multiple NAM, EMEA, and APAC carriers. Supporting USB 2.0 and USB 3.0 interfaces, the EM7590 offers an easy upgrade path to global LTE-Advanced high-speed cellular networks.



LTE-M / NB-IOT MODULES FOR THE THIN EDGE-ONE SIZE FITS ALL



- Ultra Low Power: Power consumption by our LPWA modules is as low as 1.8uA for PSM floor current, and 30uA for eDRX floor current.
- Secure Element: Our LPWA products store security keys in a hardware-based secure element for an added layer of security.
- Worldwide Bands: Our NB-IoT and LTE-M modules offer a wide selection of bands (up to 20) for scalability across the world.

5G MM WAVE AND SUB-6 MODULE IN M.2 FORMAT

Optimized 5G NR performance for applications requiring Gigabit speed, the EM9291 module is part of the EM Series offering global 5G connectivity. Designed in an M.2 form factor, the EM9291 is compatible with Sierra Wireless's EM9191 module for a simple upgrade path to get the latest standards compliance and bands, as well as the EM7690 module to help facilitate the migration and differentiation between 4G LTE and 5G.



NEW XR ROUTERS FOR HARSH ENVIRONMENT



Routers that demand the best for mission-critical applications in extremely harsh indoor, vehicle or exposed outdoor. They provide the ultimate combination of secure, cellular LTE and Wi-Fi performance, with high-availability and network agility in a ruggedized form-factor.

AIRLINK® CELLULAR ROUTERS AND GATEWAYS

AirLink® Routers & Gateways connect your remote organizational assets – people, locations and infrastructure – securely to the enterprise network, and allow you to remotely configure, deploy, monitor and manage these assets with cloud-based or on-premises management systems. AirLink routers and gateways are engineered to be deployed out-of-the-box without additional programming, and have the intelligence to stay connected.



AIRLINK® RX55: INDUSTRIAL IOT ROUTER WITH EDGE COMPUTE

The AirLink® RX55 is optimized for Industrial IoT with ultra-low power consumption and a rugged design for extreme conditions. With advanced networking and industry standard container support capabilities, the RX55 delivers intelligence securely at the edge for mission-critical applications on both public and private networks.



Alcom product portfolio

ELECTRONIC COMPONENT SOLUTIONS	WIRELESS EMBEDDED CONNECTIVITY & SENSORS	WIRELESS & INDUSTRIAL CONTROLS NETWORKING	DISPLAY & TOUCH
LED & SOLID STATE LIGHTING	POWER & EMC	RUGGED MOBILE COMPUTING	EMBEDDED SYSTEMS, AI & EDGE COMPUTING

<ul style="list-style-type: none"> • Semiconductors • Frequency & timing • Power management • Circuit protection & discretes • Magnetics • Passives & electromechanical • Connectors & cable assemblies • Photonics 	<ul style="list-style-type: none"> • Wireless modules • Antenna's • Sensors
<ul style="list-style-type: none"> • Routers & gateways • Wireless embedded computers • Industrial ethernet and IP variations • Wired & wireless machine networking • Antenna's • Device to cloud solutions • Connectivity & remote management services • Networking & connectivity 	<ul style="list-style-type: none"> • Displays • Touch screens • Optical bonding • Total display solutions
<ul style="list-style-type: none"> • LED light sources • Optics • Thermal management • Power & intelligent controls • LED modules 	<ul style="list-style-type: none"> • AC/DC power supplies • DC/DC converters • Power management modules • Wireless charging • E-mobility solutions • Transformers & power inductors • UPS • EMC filters
<ul style="list-style-type: none"> • Tablets • PDA's • Vehicle mount computers • Accessories 	<ul style="list-style-type: none"> • Computer-on-modules • Embedded boards • Industrial PC & automation • System integration

Bridging the gap between technology, people and business with a human interface.





ALCOM BELGIUM
Alcom electronics nv/sa
Singel 3
2550 Kontich
Tel: +32 (0)3 458 30 33
Fax: +32 (0)3 458 31 26
Email: info@alcom.be
www.alcom.be

Alcom electronics nv/sa
Singel 3
2550 Kontich
Tel: +32 (0)3 458 30 33
Fax: +32 (0)3 458 31 26
Email: info@alcom.be
www.alcom.be

Alcom Electronics B.V.
Rivium 1e straat 52
2909 LE Capelle a/d IJssel
Tel: +31 (0)10 288 25 00
Fax: +31 (0)10 288 25 25
Email: info@alcom.nl
www.alcom.nl

Alcom Electronics B.V.
Rivium 1e straat 52
2909 LE Capelle a/d IJssel
Tel: +31 (0)10 288 25 00
Fax: +31 (0)10 288 25 25
Email: info@alcom.nl
www.alcom.nl

Get to know us

ALCOM PROVIDES THE WORLD'S MOST ADVANCED TECHNOLOGIES.

With a team of like-minded entrepreneurs, Alcom will continue to inspire its valued customers to use advanced innovative building blocks in vertical markets. The importance of providing high-level services and a human interface based on specialism, knowledge and design-in expertise will remain key differentiators.

Alcom is positioned for growth. We invite all our customers to discuss their current and future concepts and designs. Let's connect, work and grow together.