



Featured Supplier

jjPlus

JJPlus is a forerunner in wireless communication and wireless power transfer hardware and firmware development.

The product range consists of Embedded boards, WiFi modules, Wireless Power Transmitters and Receivers. JJPlus excels in Qualcomm Atheros based WiFi modules.

Alcom supports the integration of JJPlus products into your application assisted by Alcom's JJPlus certified application engineers.

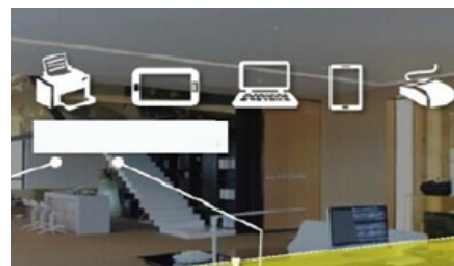
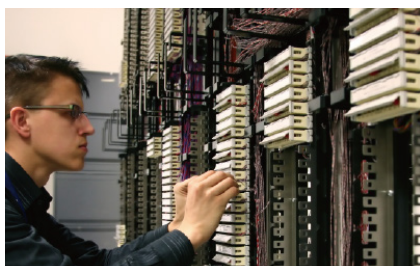
*Next-Generation WiFi & Airfuel
Resonant Power Transfer solutions*



Applications & Markets

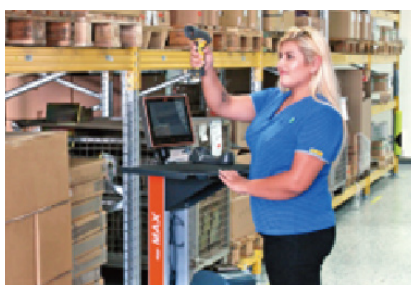
WiFi Solutions for industrial & client applications

Industrial, Outdoor, Automotive, Medical, Kiosk Display, Logistic Terminal, POS



Wireless Resonant Charging

Transferring Power without wires



WiFi Module Interface (Physical Type)

Mini PCIe	M.2	Half Holds	Pin Header	USB
<p>11ac/bgN modules ; USB for 11ac/bgN ; Dual band and Single Band Wave II 11ac modules</p>				

WiFi RF Modules for embedded communities

Wide Temperature 11ac/bgN modules with BT in mPCI-e and m.2 format



**802.11ac/a/b/g/n
BT4.2 Combo Module**
2T2R Half Mini PCI-e
JWX6058
Chipset: QCA6174A-5
Operating Temperature:
-40°C to 85°C
Commercial Grade

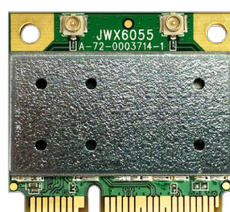


**802.11ac/a/b/g/n Wave II
BT4.2 Combo Module**
2T2R M.2 2230
JWW6051
Chipset: QCA6174A-5
Operating Temperature:
-40°C to 85°C
Commercial Grade

Dual band and Single Band Wave II 11ac modules in standard mPCI-e format



802.11ac/a/b/g/n
3T3R Mini PCI-e
JWX6052 & JWX6053
Chipset: QCA9880 & QCA9890-BR4B
Operating Temperature:
-20°C to 70°C & -40°C to 85°C
Commercial & Industrial Grade



802.11ac/a/b/g/n
2T2R Half Mini PCI-e
JWX6055 & JWX6056
Chipset: QCA9882 & QCA9892
Operating Temperature:
-20°C to 70°C & -40°C to 85°C
Commercial & Industrial Grade

Complete Line of USB for 11ac/bgN with BT in USB, mPCI-e, and m.2 format



**802.11ac/a/b/g/n
BT4.2 Combo Module**
2T2R Half Mini PCI-e
WMU6202
Chipset: RTL8822BU
Operating Temperature:
-20°C to 70°C
Commercial Grade



**802.11ac/a/b/g/n
BT4.2 Combo Module**
2T2R M.2 2230
WMU6203
Chipset: RTL8822BU
Operating Temperature:
-20°C to 70°C
Commercial Grade



**802.11ac/a/b/g/n
BT4.2 Combo Module**
2T2R Type A
WMU6204
Chipset: RTL8822BU
Operating Temperature:
-20°C to 70°C
Commercial Grade

Wireless Power Transfer

10 Watt

Transceiver Module Pair
Output power: Max 10W, 5V/2.0A to load

20 Watt

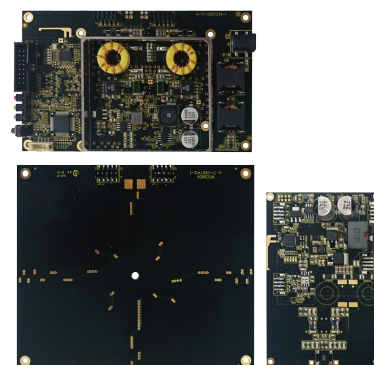
Transceiver Module Pair 1
Output power: Max 20W, 9.3V/2.15A to load

20 Watt

Transceiver Module Pair 2
Output power: Max 20W, 20V/1.0A to load

30 Watt

Transceiver Module Pair
Output power: Max 30W, 20V/1.5A to load



Co-creation starts here



ELECTRONIC COMPONENT SOLUTIONS
WIRELESS & NETWORKING
DISPLAY & TOUCH
LED & SOLID STATE LIGHTING
EMBEDDED COMPUTING
POWER & EMC

- Semiconductors
- Passives
- Electromechanical
- Photonics

- Wireless Modules
- Wireless Boxed
- Networking & Connectivity

- Display
- Touch

- Led
- Solid State Lighting

- SBC, CPU & IPC
- Memory Storage
- Rugged Mobile Computing

- Power Conversion
- EMC

Alcom Belgium Alcom Netherlands



Alcom electronics nv/sa	Alcom electronics bv
Singel 3 2550 Kontich	Rivium 1e straat 52 2909 LE Capelle a/d IJssel
Tel.: 03 458 30 33 Fax 03 458 32 26	Tel.: 010 288 25 00 Fax 010 288 25 25
info@alcom.be www.alcom.be	info@alcom.nl www.alcom.nl