



Featured Supplier



Jorjin Technologies Inc has become the leading supplier of wireless system-in-package (SiP) modules, application processor system on module (SoM) for Wearable application. Their mission is to rapidly get customer's ideas into the market. Through their development partner ecosystem, they provide a one-stop-shop solution covering antennas, camera modules, touch panels, lightening, 2.5-4G modems, software development and contract manufacturing. Together with Alcom Electronics we can help accelerate ideas – from concept to connectivity. Start with proven experience and all the development tools and resources you'll need.

Wireless connectivity, AR Smart Glasses and System on Modules



Applications & Markets



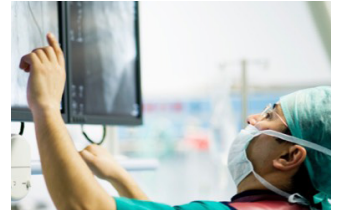
INDUSTRIAL



EDUCATION



LOGISTIC



MEDICAL



FACTORY AUTOMATION



REMOTE MONITORING

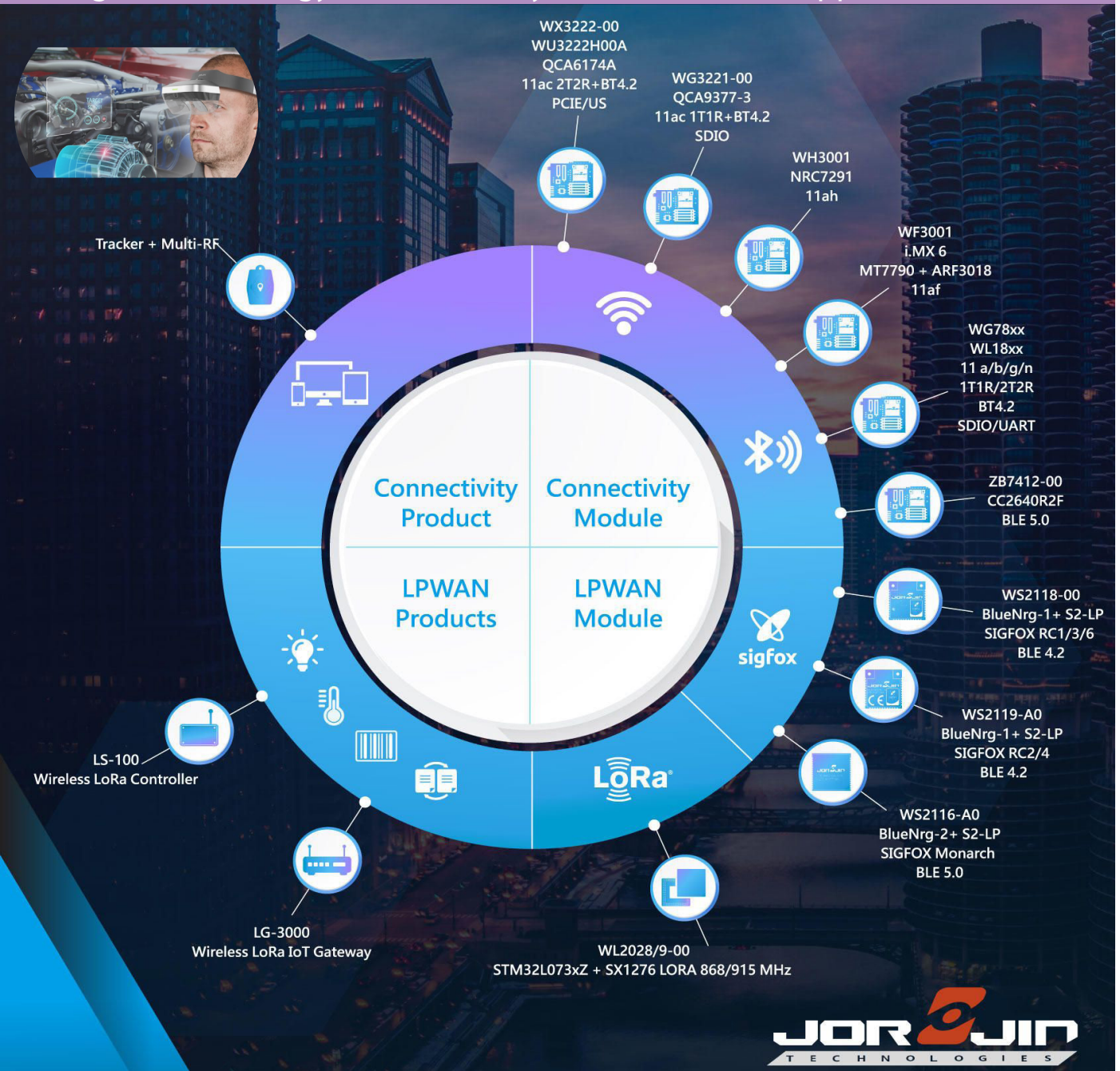


HOME & BUILDING

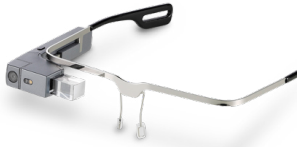


WIRELESS COMMUNICATION

Smartglass Technology & Connectivity solutions for IIoT Applications



Wearables



J-Supporter

- Android OS available
- Headset only 27g



J-Reality

- Optimal computing performance empowered by Qualcomm® Snapdragon™ SD820 ARM processor



J4

- Realistic 3D & AR smart glasses
- Near-eye display for true 3D experience

System on Module



SDW-2500 System on Module

- Snapdragon™ Wear 2500 (APQ80009W)
- Qualcomm® Quad-Core ARM Cortex A7 (3: bit) at 1.094GHz
- Qualcomm® Adreno™ 304 GPU
- Qualcomm® Modem DSP



SD80 System on Module

- Snapdragon™ 820 (APQ8096)
- Qualcomm® Kryo™ CPU, Quad-Core, 64-bit, 2.2GHz
- Qualcomm® Adreno™ 530 GPU
- Qualcomm® Hexagon™ 680 DSP
- Qualcomm® Spectra™ ISP

Wireless Connectivity



LPWAN SIGFOX

- STM BlueNRG-1, S2-LP, sub-1GHz PA, 16MHz, 50MHz & 32.768KHz crystals, DC2DC, and U.FL connector on a single module



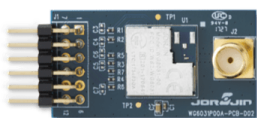
LPWAN LoRa

- High network capacity : 1 Gateway <> 500 nodes
- Hybrid-WAN support : 1G ETH, 2.4GHz/5GHz Wi-Fi, 3G/LTE (optional)
- Support max.transmission distance of up to 10 KM



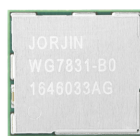
BLE

- TI CC2640R2F, 24MHz & 32.768KHz crystals, DC2DC, and chip antenna on a single module
- Built-in TI CC2640R2F 5x5mm RHB VQFN32 (15 GPIOs)
- LGA 25pins package



WiFi wireless connectivity module

- Dimensions: 38 mm (L) x 20 mm (W)
- IEEE 802.11b/g/n compliant RF transceiver
- SMA RF connector for external antenna



WiFi for CPU industrial SiP module

- IEEE 802.11 b/g/n
- External crystal oscillator / TCXO
- Dimension 12.8mm(L) x 12mm(W) x 1.7mm(H)



WiFi + BT for CPU

- 2.4GHz WLAN (b,g,n), BT(2.1/3.0/4.1)
- Integrated crystal, Tx/Rx switch and bandpass filter
- WLAN / Bluetooth coexistence circuitry



Sensing Solution Barcode Engine

- Supports a wide variety of symbologies, incl. 1D, 2D and PDF417 barcodes



Sensing Solution Bluetooth ring scanner

- Reads 1D, 2D, and PDF417 barcodes



Sensing Solution mmWave Radar

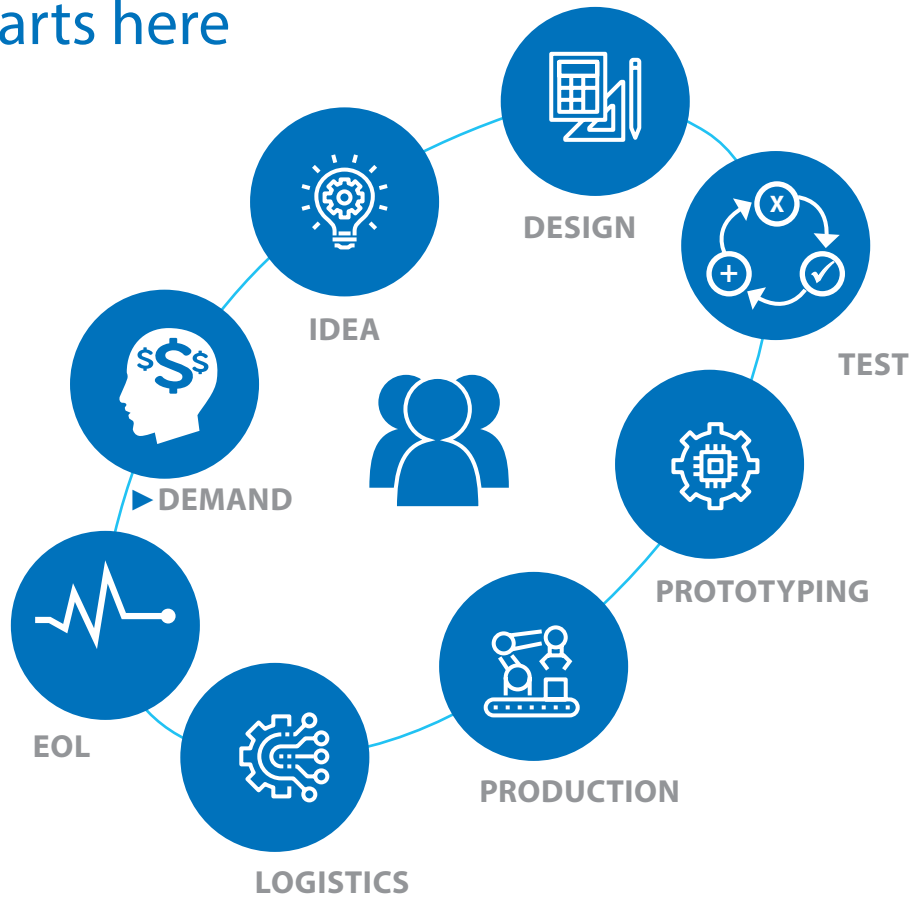
- Industrial Diagnostic & Environmental Monitoring



Sensing Solution Tracker

- Low-Power Asset Tracking

Co-creation starts here



ELECTRONIC COMPONENT SOLUTIONS

- Semiconductors
- Passives
- Electromechanical
- Photonics

WIRELESS & NETWORKING

- Wireless Modules
- Wireless Boxed
- Networking & Connectivity

DISPLAY & TOUCH

- Display
- Touch

- LED
- Solid State Lighting

LED & SOLID STATE LIGHTING

EMBEDDED COMPUTING

- SBC, CPU & IPC
- Memory Storage
- Rugged Mobile Computing

- Power Conversion
- EMC

POWER & EMC

Alcom Belgium Alcom Netherlands



Alcom Electronics nv/sa

Alcom Electronics B.V.

Singel 3
2550 Kontich

Rivium 1e straat 52
2909 LE Capelle a/d IJssel

Tel +32 (0)3 458 30 33
Fax +32 (0)3 458 31 26

Tel +31 (0)10 288 25 00
Fax +31 (0)10 288 25 25

info@alcom.be
www.alcom.be

info@alcom.nl
www.alcom.nl