

Industrial Data Communication



korenix | A Beijer Group
company

Beijer
ELECTRONICS

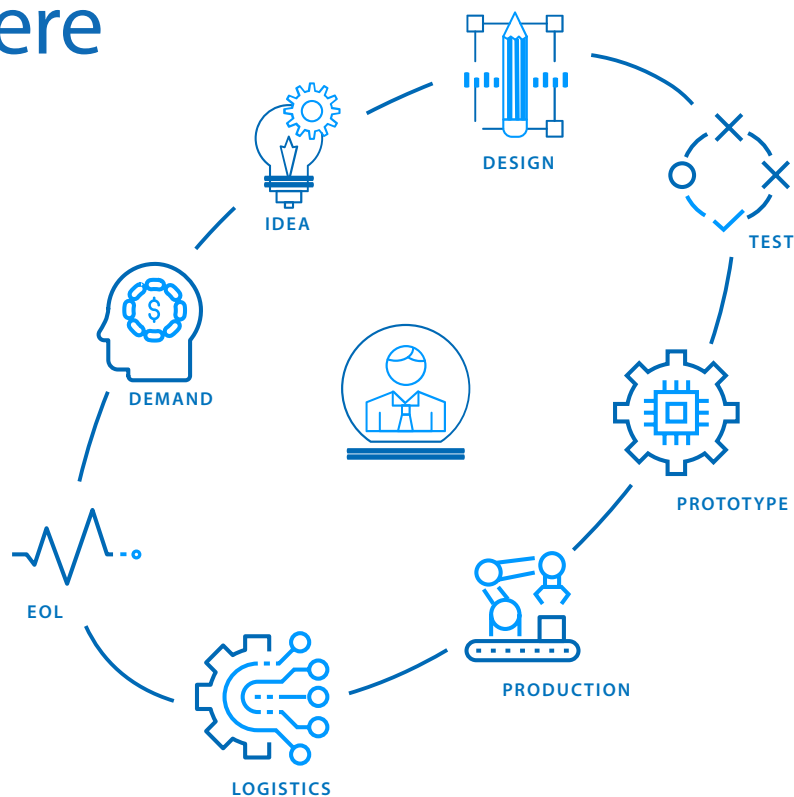


Korenix & Alcom



Korenix Technology, a Beijer group company is a market leading brand in industrial wireless and networking solutions with an extensive track record in providing innovative, market-oriented, value-focused solutions. Korenix Wireless and Cellular solutions are highly appreciated, especially for its Industrial Dual Band Dual Radio 802.11ac Wireless AP for large area and harsh environment use and Industrial Cellular + WIFI + Gigabit Switch IP Gateway which can be applied in multiple markets such as railway, intelligent transportation system, machine to machine, facility monitoring, smart building, smart grid, IP surveillance, etc. Where ever networking security and availability is important Korenix and Alcom are the partners of choice.

Co-creation starts here



Alcom considers everybody an indispensable added value in the collaborative chain with all of its partners.



Applications & Markets



TRANSPORTATION



AUTOMATION



POWER & ENERGY



HEAVY INDUSTRY

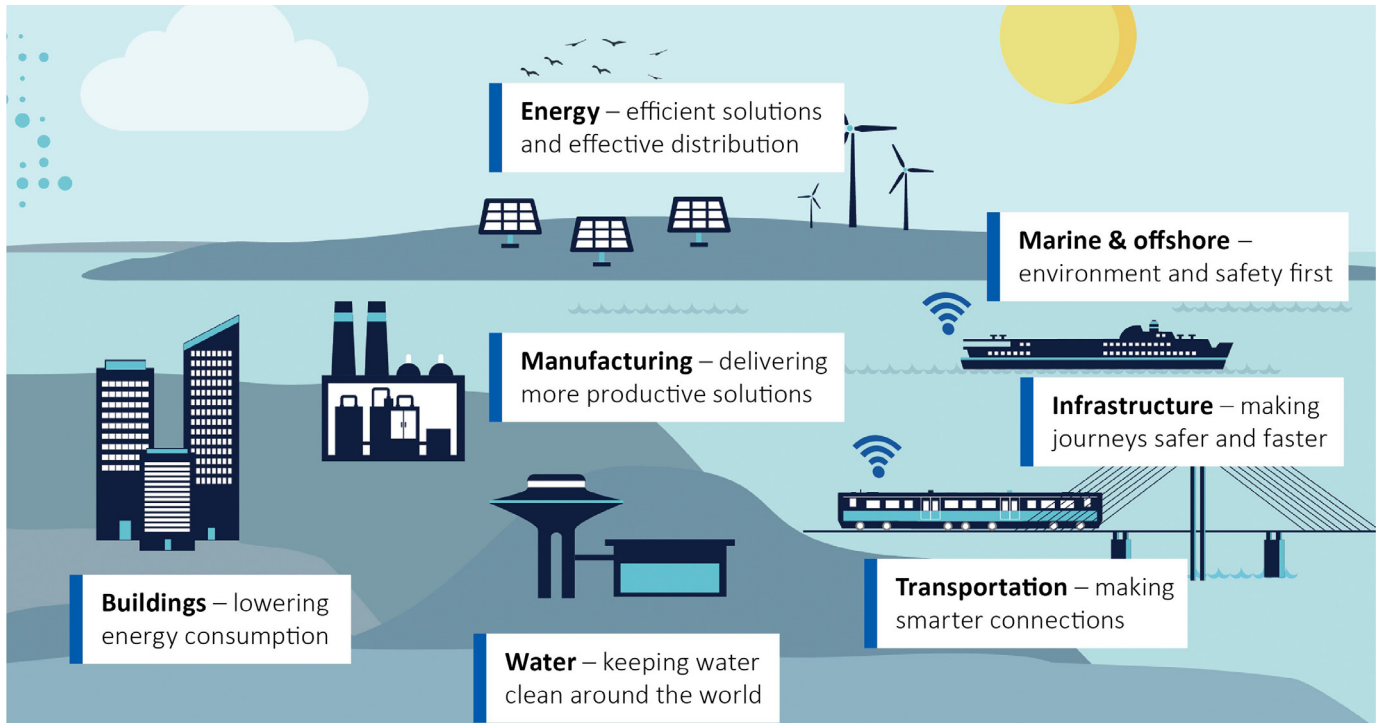


SURVEILLANCE



IIOT

Cross Industry applications



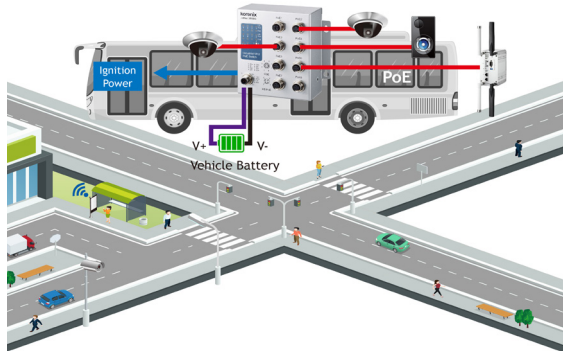
Product Overview

Ethernet Switch

Korenix offers a wide product range including unmanaged, managed, PoE and specific switch for electric field, railway and ITS.

To fulfill harsh environments with vibrations and electrical noise, we enable to provide high quality switches with industrial certificates such as Heavy Industrial, IEC 61850-3, EN50155, NEMA TS2 etc.

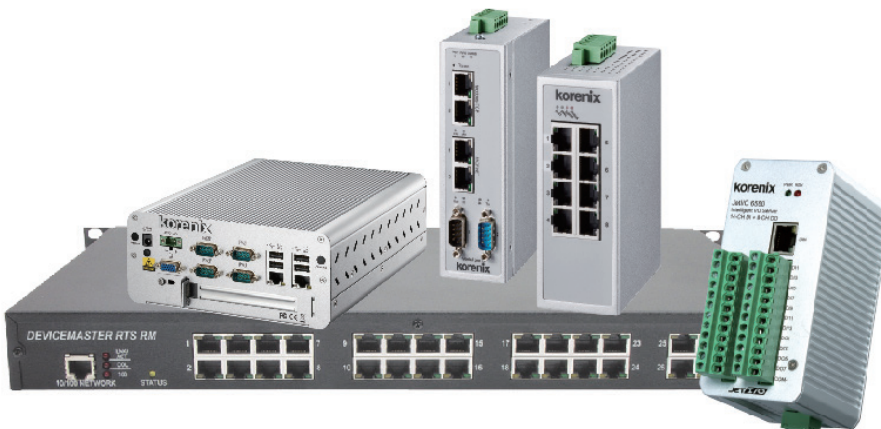
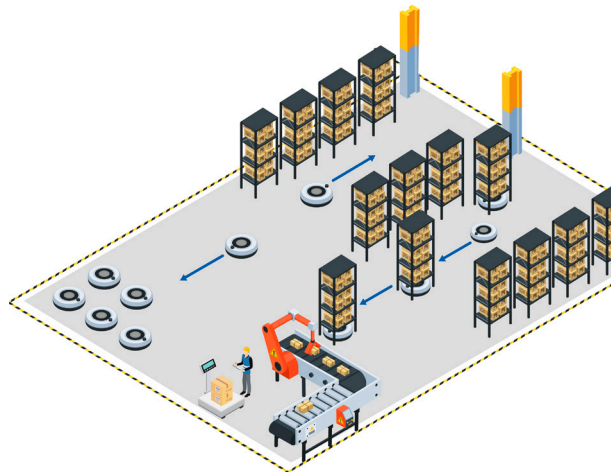
- Layer 2
- Layer 3
- Unmanaged
- PoE
- Rackmount
- 10G
- EN 50155
- IEC 61850-3



Industrial Connectivity

Korenix provides multiple device server, fieldbus gateway, protocol switches, industrial computer and I/O solution in industrial level. Products offer enhanced protection design and certifications for application.

- Serial Device
- Fieldbus Gateway
- Protocol Switch
- Industrial Computer

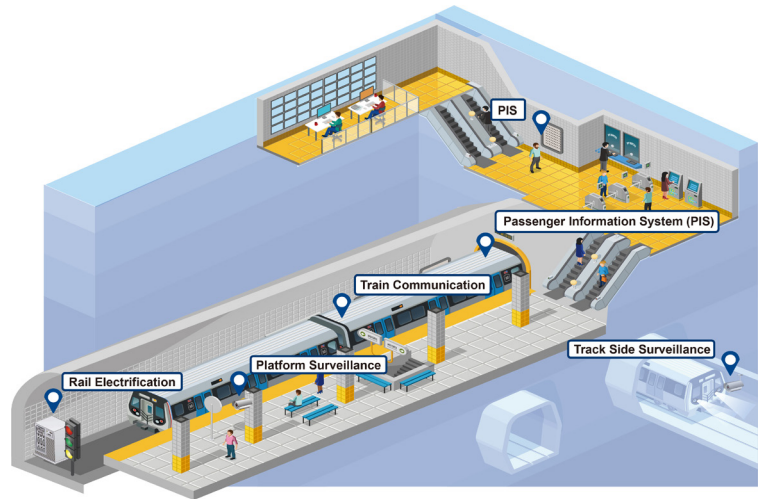


Product Overview

Wireless products

Korenix cellular technology allows users to easily establish connectivity between isolated networks, giving greater flexibility for building secure applications. Industrial wireless solutions provide invaluable wireless infrastructure for your WLAN, covering affordable, entry-level wireless access points/clients to high-end multifunctional access points/stations.

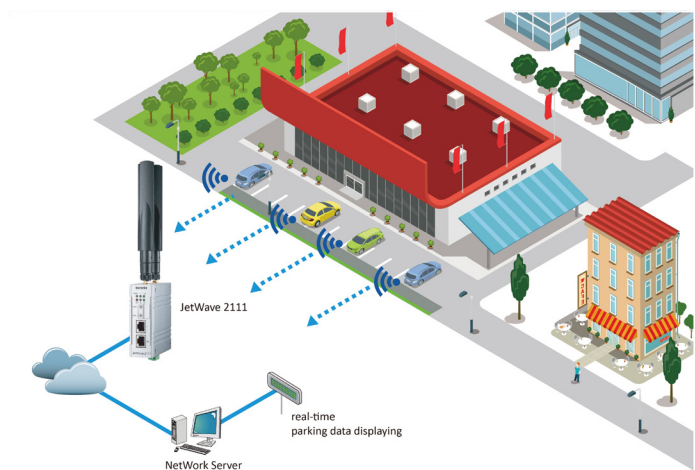
- WiFi
- Cellular
- WiFi + Cellular
- LoRa
- Others



Media converter

Korenix have a wide range of media converters to meet industry needs, including fiber, Ethernet, RS-232, RS-422, RS-485.

- Ethernet/Fiber Converter
- Serial Converter
- VDSL Extender
- PoE Injector
- Industrial Connectivity



New product releases

L3 FULL GIGABIT INDUSTRIAL SWITCH

The JetNet 7628X-4F is a 19-inch L3 Full Gigabit Industrial switch and is specially designed for surveillance application that operate in extremely harsh environments. With full Gigabit capability, the JetNet 7628X-4F increases bandwidth to provide high performance and the ability to quickly transfer large amounts of video, voice, and data across a network.

New!
JetNet 7628X-4F



INDUSTRIAL RELIABLE WIRELESS AP

Korenix JetWave 4200 series is an industrial 802.11n/a/b/g/ac Wireless AP which offers a high performance and reliability wireless solution for both 2.4G and 5G radio band. With the JetWave 4200 series wireless access point, a network designer will easily achieve the integration of wired and wireless networks.

INDUSTRIAL M12 UN-MANAGED SWITCH

The JetNet 3508/3808/3908 series are a new generation Switch with rugged M12 connectors. It is designed for IP Surveillance in harsh environments such as Train, MRT, Automation and LRV systems. The switch system adapts to vehicle/railway electrical power system and supports several types of input voltage rating to correspond with different train electrical power systems.



ITXPT-LABEL FOR INTELLIGENT TRANSPORTATION MARKET



Korenix's unmanaged Ethernet switches has received the ITxPT label. The ITxPT is a Belgium-based association open to public transport suppliers and manufacturers developing standardize and interoperable onboard and back-office IT systems for public transport. Korenix unmanaged ethernet switch JetNet 3808G-M12, JetNet 3908G-M12, JetNet 3508-LVDC, JetNet 3508G-LVDC have been tested and validated in accordance with the ITxPT specification S01 v2.1.0.

DIN-RAIL MANAGED ETHERNET SWITCHES

Korenix offers a wide product range including unmanaged, managed, PoE and specific switch for electric field, railway and ITS. To fulfill harsh environments with vibrations and electrical noise, we enable to provide high quality switches with industrial certificates such as Heavy Industrial, IEC 61850-3, EN50155, NEMA TS2 etc.



SAVING UP SPACE WITH IEEE 802.3BT POE SWITCH SERIES

Flexibility: The JetNet 5200 series provide 8/10/12/16 ports and PoE/Non-PoE options.

90W Ultra PoE: Supporting the latest IEEE802.3bt standard, the series can provide up to 90W per port.

Cyber security: Multiple cyber security features helps project owners to prevent malicious attack.

High Fiber Ports: With up to 8 fibers ports, the series can fulfill applications that requires multiple fiber.



Alcom product portfolio

ELECTRONIC COMPONENT SOLUTIONS	WIRELESS EMBEDDED CONNECTIVITY & SENSORS	WIRELESS & INDUSTRIAL CONTROLS NETWORKING	DISPLAY & TOUCH
LED & SOLID STATE LIGHTING	POWER & EMC	RUGGED MOBILE COMPUTING	EMBEDDED SYSTEMS, AI & EDGE COMPUTING

- Semiconductors
- Frequency & timing
- Power management
- Circuit protection & discretes
- Magnetics
- Passives & electromechanical
- Connectors & cable assemblies
- Photonics

- Wireless modules
- Antenna's
- Sensors

- Routers & gateways
- Wireless embedded computers
- Industrial ethernet and IP variations
- Wired & wireless machine networking
- Antenna's
- Device to cloud solutions
- Connectivity & remote management services
- Networking & connectivity

- Displays
- Touch screens
- Optical bonding
- Total display solutions

- LED light sources
- Optics
- Thermal management
- Power & intelligent controls
- LED modules

- AC/DC power supplies
- DC/DC converters
- Power management modules
- Wireless charging
- E-mobility solutions
- Transformers & power inductors
- UPS
- EMC filters

- Tablets
- PDA's
- Vehicle mount computers
- Accessories

- Computer-on-modules
- Embedded boards
- Industrial PC & automation
- System integration



Bridging the gap between technology, people and business with a human interface.





ALCOM BELGIUM
Alcom electronics nv/sa
Singel 3
2550 Kontich
Tel: +32 (0)3 458 30 33
Fax: +32 (0)3 458 31 26
Email: info@alcom.be
www.alcom.be

Alcom electronics nv/sa
Singel 3
2550 Kontich
Tel: +32 (0)3 458 30 33
Fax: +32 (0)3 458 31 26
Email: info@alcom.be
www.alcom.be

ALCOM THE NETHERLANDS
Alcom Electronics B.V.
Rivium 1e straat 52
2909 LE Capelle a/d IJssel
Tel: +31 (0)10 288 25 00
Fax: +31 (0)10 288 25 25
Email: info@alcom.nl
www.alcom.nl

Alcom Electronics B.V.
Rivium 1e straat 52
2909 LE Capelle a/d IJssel
Tel: +31 (0)10 288 25 00
Fax: +31 (0)10 288 25 25
Email: info@alcom.nl
www.alcom.nl

Get to know us

ALCOM PROVIDES THE WORLD'S MOST ADVANCED TECHNOLOGIES.

With a team of like-minded entrepreneurs, Alcom will continue to inspire its valued customers to use advanced innovative building blocks in vertical markets. The importance of providing high-level services and a human interface based on specialism, knowledge and design-in expertise will remain key differentiators.

Alcom is positioned for growth. We invite all our customers to discuss their current and future concepts and designs. Let's connect, work and grow together.

