

V12/21

Active electronic switch



Colour of Housing: red (No illumination)



Colour of Housing: green (no illumination)



Lateral illumination: blue

See below:

Approvals and Compliances

Description

- Active electronic switch (LA) / pushbutton (MO) without moving parts
- Triggering of the switching mechanism by light pressure on the switching surface
- Multicolor illumination
- Unilluminated variants in different colors

Unique Selling Proposition

- Small installation depth
- Variable input voltage
- Trendy design

Characteristics

- Side illumination
- Wearless - no moving parts

Weblinks

[pdf data sheet](#), [html datasheet](#), [General Product Information](#), [CAD-Drawings](#), [Product News](#), [Detailed request for product](#)

Technical Data

Electrical Data

| | |
|-----------------------------|---------------------------------|
| Switching Function | momentary (MO) or latching (LA) |
| Switching Voltage | max. 60 VDC |
| Switching Current | max. 100 mA |
| Electrical Rating | 1 W |
| Switch Resistance OFF | > 10 MΩ |
| Switch Resistance ON | < 20 Ω |
| Supply Voltage | 5 - 28 VDC |
| Reverse Polarity Protection | yes |
| Short Circuit Protection | yes |
| Lifetime | >20 million actuations |

Mechanical Data

| | |
|-------------------------------|---------|
| Actuating Force | 1 - 3 N |
| Shock Protection | IK06 |
| Mounting Depth | 8 mm |
| Tightening Torque Plastic Nut | 2.5 Nm |

Climatical Data

| | |
|---|------------------------|
| Operating Temperature | -40 to 85 °C |
| Storage Temperature | -40 to 85 °C |
| IP Protection Class Front Side | IP67 acc. to IEC 60529 |
| Salt Spray Test (acc. to IEC60068-2-11) | 96 h Residence Time |

Material

| | |
|------------------|-----------------|
| Housing | PMMA |
| Actuator | Stainless Steel |
| Illuminated ring | PMMA |
| Rear cover | PC |
| Mounting Nut | PBT GF30 |

Approvals and Compliances

Detailed information on product approvals, code requirements, usage instructions and detailed test conditions can be looked up in [Details about Approvals](#)





SCHURTER products are designed for use in industrial environments. They have approvals from independent testing bodies according to national and international standards. Products with specific characteristics and requirements such as required in the automotive sector according to IATF 16949, medical technology according to ISO 13485 or in the aerospace industry can be offered exclusively with customer-specific, individual agreements by SCHURTER.



Singel 3 | B-2550 Kontich | Belgium | Tel. +32 (0)3 458 30 33
info@alcom.be | www.alcom.be
 Rivium 1e straat 52 | 2909 LE Capelle aan den IJssel | The Netherlands
 Tel. +31 (0)10 288 25 00 | info@alcom.nl | www.alcom.nl

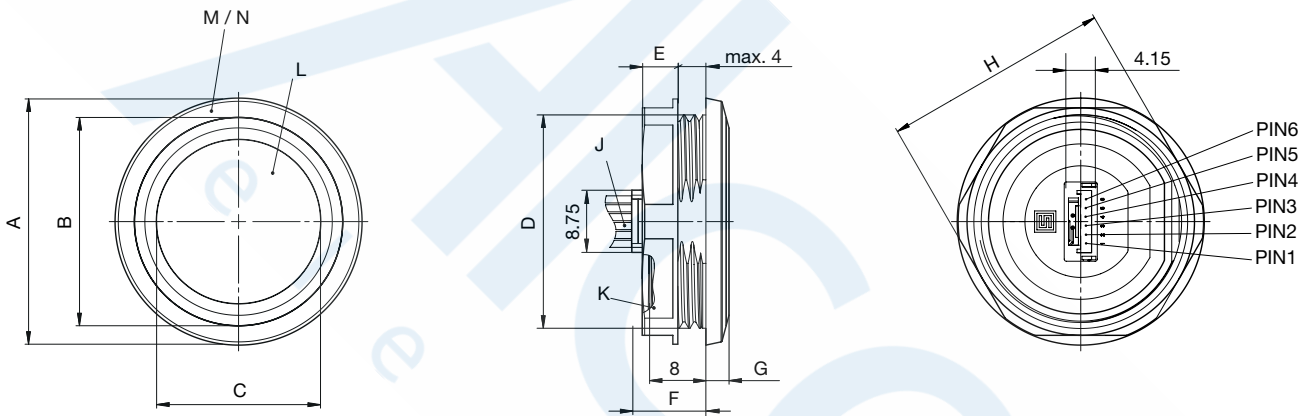
Compliances

The product complies with following Guide Lines

| Identification | Details | Initiator | Description |
|--|--|-------------|---|
|  | CE declaration of conformity | SCHURTER AG | The CE marking declares that the product complies with the applicable requirements laid down in the harmonisation of Community legislation on its affixing in accordance with EU Regulation 765/2008. |
|  | UKCA declaration of conformity | SCHURTER AG | The UKCA marking declares that the product complies with the applicable requirements laid down in the British Amendment of Regulation (EC) 765/2008. |
|  | RoHS | SCHURTER AG | Directive RoHS 2011/65/EU, Amendment (EU) 2015/863 |
|  | REACH | SCHURTER AG | On 1 June 2007, Regulation (EC) No 1907/2006 on the Registration, Evaluation, Authorization and Restriction of Chemicals 1 (abbreviated as "REACH") entered into force. |

Dimension [mm]

No illumination / Lateral illumination

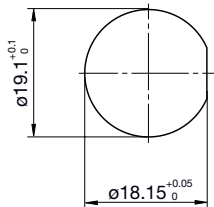


Suitable for connector: JST GHR-04V-S

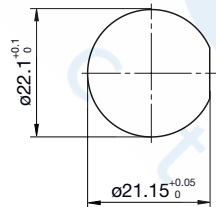
| | MSS19 | MSS22 | MSS30 |
|---|----------------------------|-----------------|-----------------|
| A | ø22.00mm | ø25.50mm | ø34.75mm |
| B | ø18.55mm | ø21.50mm | ø29.30mm |
| C | ø14.70mm | ø16.90mm | ø23.10mm |
| D | M 19x0.75 | M 22x1.00 | M 30x1.50 |
| E | 4.00mm | 4.00mm | 5.00mm |
| F | 11.30mm | 11.10mm | 10.40mm |
| G | 2.00mm | 2.40mm | 3.25mm |
| H | SW / AF 22.00mm | SW / AF 24.00mm | SW / AF 32.00mm |
| J | Stranded wire | | |
| K | Nut (Plastic) | | |
| L | Actuator (Stainless steel) | | |
| M | Lightguide (Plastic) | | |
| N | Bezel (Plastic) | | |

Dimension

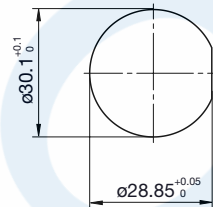
MSS19 Mounting hole



MSS22 Mounting hole

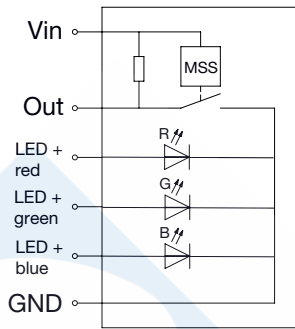


MSS30 Mounting hole



Diagrams

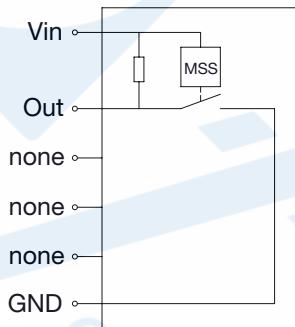
Illuminated



Illuminated

| Connection assignment | | |
|-----------------------|------------|----------------------|
| PIN-number | Wire color | Function |
| 1 | Brown BN | Vin = 5 VDC...28 VDC |
| 2 | Black BK | GND |
| 3 | White WT | Out |
| 4 | Blue BL | LED blue |
| 5 | Green GN | LED green |
| 6 | Red RD | LED red |

Non-illuminated



Non-illuminated

| Connection assignment | | |
|-----------------------|------------|----------------------|
| PIN-number | Wire color | Function |
| 1 | Brown BN | Vin = 5 VDC...28 VDC |
| 2 | Black BK | GND |
| 3 | White WT | Out |
| 4 | Not used | |
| 5 | Not used | |
| 6 | Not used | |

Lateral illumination

| Operating Data | Forward Voltage min. | Forward Voltage max. |
|--|----------------------|----------------------|
| LED red | 1.7 V | 2.4 V |
| LED green | 2.6 V | 3.2 V |
| LED blue | 2.6 V | 3.2 V |
| Forward current (at +25°C) ¹⁾ | | 50 mA |
| Forward current (at +85°C) ¹⁾ | | 10 mA |

1) Linear forward current derating curve

All Variants

| Diameter [mm] | Rated Current [A] | Illumination type | Illumination color | Colour of Housing | Switching Function | Suitable cable | Order Number |
|---------------|-------------------|----------------------|--------------------|-------------------|--------------------|----------------|---------------------------|
| 19 | 100 mA | Without | No illumination | blue | latching (LA) | 3 Wires | 3-126-736 |
| 19 | 100 mA | Without | No illumination | black | latching (LA) | 3 Wires | 3-126-737 |
| 19 | 100 mA | Without | No illumination | grey | latching (LA) | 3 Wires | 3-126-738 |
| 19 | 100 mA | Without | No illumination | white | latching (LA) | 3 Wires | 3-126-740 |
| 19 | 100 mA | Without | No illumination | red | latching (LA) | 3 Wires | 3-126-734 |
| 19 | 100 mA | Without | No illumination | green | latching (LA) | 3 Wires | 3-126-735 |
| 19 | 100 mA | Without | No illumination | yellow | latching (LA) | 3 Wires | 3-126-739 |
| 19 | 100 mA | Without | No illumination | orange | latching (LA) | 3 Wires | 3-126-741 |
| 19 | 100 mA | Lateral illumination | Multicolor | translucent | latching (LA) | 6 Wires | 3-126-723 |
| 19 | 100 mA | Without | No illumination | blue | momentary (MO) | 3 Wires | 3-126-728 |
| 19 | 100 mA | Without | No illumination | black | momentary (MO) | 3 Wires | 3-126-729 |
| 19 | 100 mA | Without | No illumination | grey | momentary (MO) | 3 Wires | 3-126-730 |
| 19 | 100 mA | Without | No illumination | white | momentary (MO) | 3 Wires | 3-126-732 |
| 19 | 100 mA | Without | No illumination | red | momentary (MO) | 3 Wires | 3-126-726 |
| 19 | 100 mA | Without | No illumination | green | momentary (MO) | 3 Wires | 3-126-727 |
| 19 | 100 mA | Without | No illumination | yellow | momentary (MO) | 3 Wires | 3-126-731 |
| 19 | 100 mA | Without | No illumination | orange | momentary (MO) | 3 Wires | 3-126-733 |
| 19 | 100 mA | Lateral illumination | Multicolor | translucent | momentary (MO) | 6 Wires | 3-126-722 |
| 22 | 100 mA | Without | No illumination | blue | latching (LA) | 3 Wires | 3-126-772 |
| 22 | 100 mA | Without | No illumination | black | latching (LA) | 3 Wires | 3-126-773 |
| 22 | 100 mA | Without | No illumination | grey | latching (LA) | 3 Wires | 3-126-774 |
| 22 | 100 mA | Without | No illumination | white | latching (LA) | 3 Wires | 3-126-776 |
| 22 | 100 mA | Without | No illumination | red | latching (LA) | 3 Wires | 3-126-770 |
| 22 | 100 mA | Without | No illumination | green | latching (LA) | 3 Wires | 3-126-771 |
| 22 | 100 mA | Without | No illumination | yellow | latching (LA) | 3 Wires | 3-126-775 |
| 22 | 100 mA | Without | No illumination | orange | latching (LA) | 3 Wires | 3-126-777 |
| 22 | 100 mA | Lateral illumination | Multicolor | translucent | latching (LA) | 6 Wires | 3-126-759 |
| 22 | 100 mA | Without | No illumination | blue | momentary (MO) | 3 Wires | 3-126-764 |
| 22 | 100 mA | Without | No illumination | black | momentary (MO) | 3 Wires | 3-126-765 |
| 22 | 100 mA | Without | No illumination | grey | momentary (MO) | 3 Wires | 3-126-766 |
| 22 | 100 mA | Without | No illumination | white | momentary (MO) | 3 Wires | 3-126-768 |
| 22 | 100 mA | Without | No illumination | red | momentary (MO) | 3 Wires | 3-126-762 |
| 22 | 100 mA | Without | No illumination | green | momentary (MO) | 3 Wires | 3-126-763 |
| 22 | 100 mA | Without | No illumination | yellow | momentary (MO) | 3 Wires | 3-126-767 |
| 22 | 100 mA | Without | No illumination | orange | momentary (MO) | 3 Wires | 3-126-769 |
| 22 | 100 mA | Lateral illumination | Multicolor | translucent | momentary (MO) | 6 Wires | 3-126-758 |
| 30 | 100 mA | Without | No illumination | blue | latching (LA) | 3 Wires | 3-126-807 |
| 30 | 100 mA | Without | No illumination | black | latching (LA) | 3 Wires | 3-126-808 |
| 30 | 100 mA | Without | No illumination | grey | latching (LA) | 3 Wires | 3-126-809 |
| 30 | 100 mA | Without | No illumination | white | latching (LA) | 3 Wires | 3-126-811 |
| 30 | 100 mA | Without | No illumination | red | latching (LA) | 3 Wires | 3-126-805 |
| 30 | 100 mA | Without | No illumination | green | latching (LA) | 3 Wires | 3-126-806 |
| 30 | 100 mA | Without | No illumination | yellow | latching (LA) | 3 Wires | 3-126-810 |
| 30 | 100 mA | Without | No illumination | orange | latching (LA) | 3 Wires | 3-126-812 |
| 30 | 100 mA | Lateral illumination | Multicolor | translucent | latching (LA) | 6 Wires | 3-126-794 |

| Diameter [mm] | Rated Current [A] | Illumination type | Illumination color | Colour of Housing | Switching Function | Suitable cable | Order Number |
|---------------|-------------------|----------------------|--------------------|-------------------|--------------------|----------------|--------------|
| 30 | 100 mA | Without | No illumination | blue | momentary (MO) | 3 Wires | 3-126-799 |
| 30 | 100 mA | Without | No illumination | black | momentary (MO) | 3 Wires | 3-126-800 |
| 30 | 100 mA | Without | No illumination | grey | momentary (MO) | 3 Wires | 3-126-801 |
| 30 | 100 mA | Without | No illumination | white | momentary (MO) | 3 Wires | 3-126-803 |
| 30 | 100 mA | Without | No illumination | red | momentary (MO) | 3 Wires | 3-126-797 |
| 30 | 100 mA | Without | No illumination | green | momentary (MO) | 3 Wires | 3-126-798 |
| 30 | 100 mA | Without | No illumination | yellow | momentary (MO) | 3 Wires | 3-126-802 |
| 30 | 100 mA | Without | No illumination | orange | momentary (MO) | 3 Wires | 3-126-804 |
| 30 | 100 mA | Lateral illumination | Multicolor | translucent | momentary (MO) | 6 Wires | 3-126-793 |

Availability for all products can be searched real-time: <https://www.schurter.com/en/Stock-Check/Stock-Check-SCHURTER>

Packaging unit 10 Pcs

Accessories

Description



Kabel zu MSS
 Kabel zu MSS



Singel 3 | B-2550 Kontich | Belgium | Tel. +32 (0)3 458 30 33
 info@alcom.be | www.alcom.be
 Rivium 1e straat 52 | 2909 LE Capelle aan den IJssel | The Netherlands
 Tel. +31 (0)10 288 25 00 | info@alcom.nl | www.alcom.nl