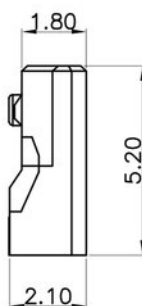
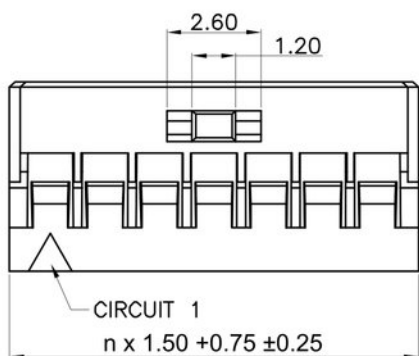
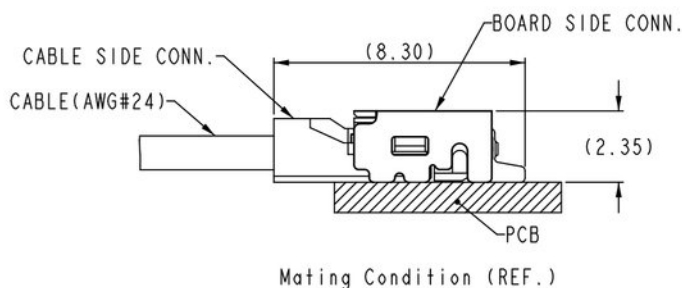
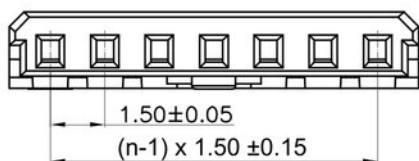
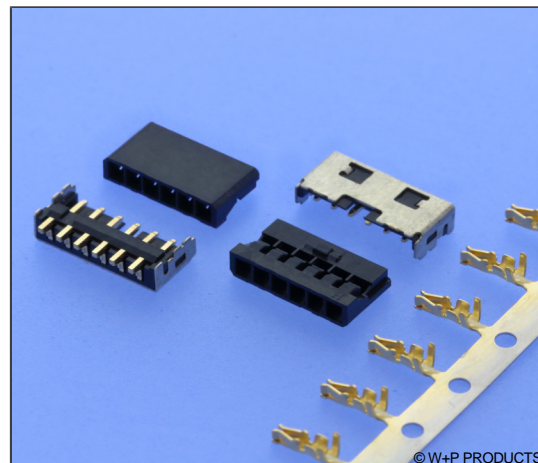


Geschirmte SMT-Crimp-Rast-Stiftleisten RM 1,50mm, stehend/liegend, 1-reihig

Shielded SMT Friction Lock Pin Headers, 1.50mm Pitch, Vertical/Horizontal, Single Row

Technische Daten / Technical Data

Gehäuse	Rostfreier Stahl
Shell	Stainless steel
Isolierkörper	Thermoplast, nach UL94 V-0, halogenfrei
Insulator	Thermoplastic, rated UL94 V-0, halogen-free
Farbe	Schwarz
Colour	Black
Kontaktmaterial	Kupferlegierung
Contact Material	Copper alloy
Kontaktfläche	Lt. Oberflächenoptionen, über Ni
Contact Surface	Acc. to options (see below), over Ni
Aderquerschnitt	AWG 30 ~ 24
Applicable wire Gauge	AWG 30 ~ 24
Durchgangswiderstand	< 20 mΩ
Contact Resistance	< 20 mΩ
Isolationswiderstand	> 500 MΩ
Insulation Resistance	> 500 MΩ
Spannungsfestigkeit	500 V AC/DC
Test Voltage	500 V AC/DC
Nennspannung	50 V AC/DC
Voltage Rating	50 V AC/DC
Nennstrom	3,5 A max.
Current Rating	3.5 A max.
Temperaturbereich	-25 °C ... +85 °C
Temperature Range	-25 °C ... +85 °C
Verarbeitung	260 °C max. für 10s max.
Processing	260 °C max. for 10s max.



Series

5692

Contacts*

07

04-08

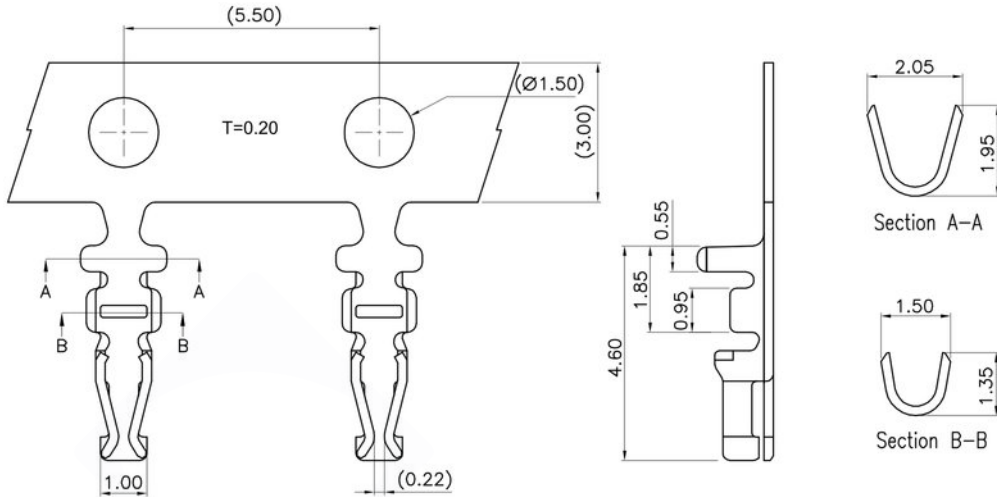
Type*

1

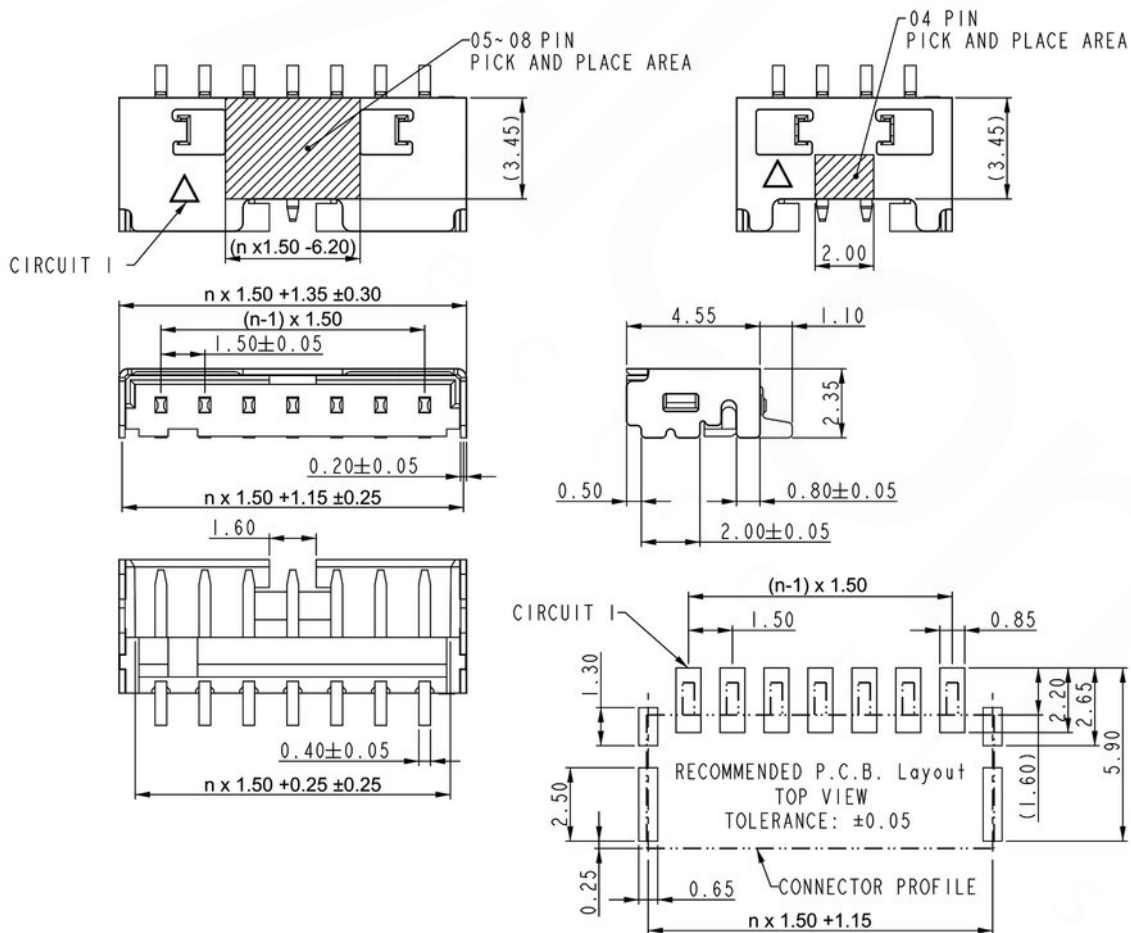
1 Gehäuse für Buchsenkontakte
Housings for female terminals

5692

Geschirmte SMT-Crimp-Rast-Stiflleisten RM 1,50mm, stehend/liegend, 1-reihig
Shielded SMT Friction Lock Pin Headers, 1.50mm Pitch, Vertical/Horizontal, Single Row



Series **5692** — Contacts **01** — Type* **2** — Plating* **00** — AWG **2430**
 2 Buchsenkontakte
 Female terminals
 00 Au flash
 50 Sn
 2430 AWG 30 ~ 24



Series **5692** — Contacts* **07** — Type **4** — Plating* **00** — Packaging **TR**
 04-08
 4 Stiflleiste liegend
 Pin header vertical
 00 Au flash
 50 Sn
 TR