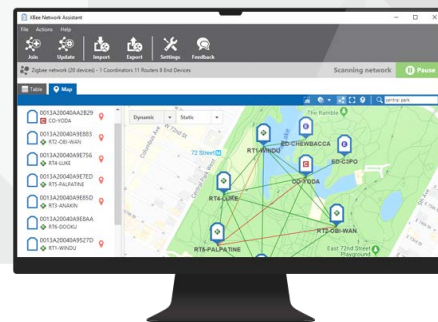




NETWORK SURVEY AND  
DEPLOYMENT TOOL



# DIGI XBEE NETWORK ASSISTANT

Deploy, visualize and configure any local RF network installation

Deploying a wireless IoT network in the field can be an expensive and time-consuming task, often riddled with technical challenges. Digi XBee® Network Assistant streamlines wireless deployment with these key functions: mass configuration and firmware updates, device mapping and signal strength analysis.

Digi XBee Network Assistant's firmware update feature makes it easy to push firmware and configuration updates to the local network, ensuring the code is dispersed efficiently across all nodes.

With the device mapping feature, a network technician can place devices on a Google Map image or local static map to model an environment such as an office floor plan.

In a mesh network, the map function then displays the signal quality between the nodes. This signal mapping feature is a powerful interface; the network technician can view the network's signal strength data and adjust nodes accordingly to optimize the entire local network.

## KEY FEATURES

### Automatic network discovery

Click the Network Discovery button and see all nodes in the range.

### Network visualization and mapping

Using Google Maps or a static map image, place your Digi XBee devices to indicate node locations.

### Network strength

Analyze and debug the network strength between nodes.

### Firmware and configuration

Batch update firmware and configuration settings for all nodes on a network.

